

BENCHMILL 6100 INCLUDED ACCESSORIES

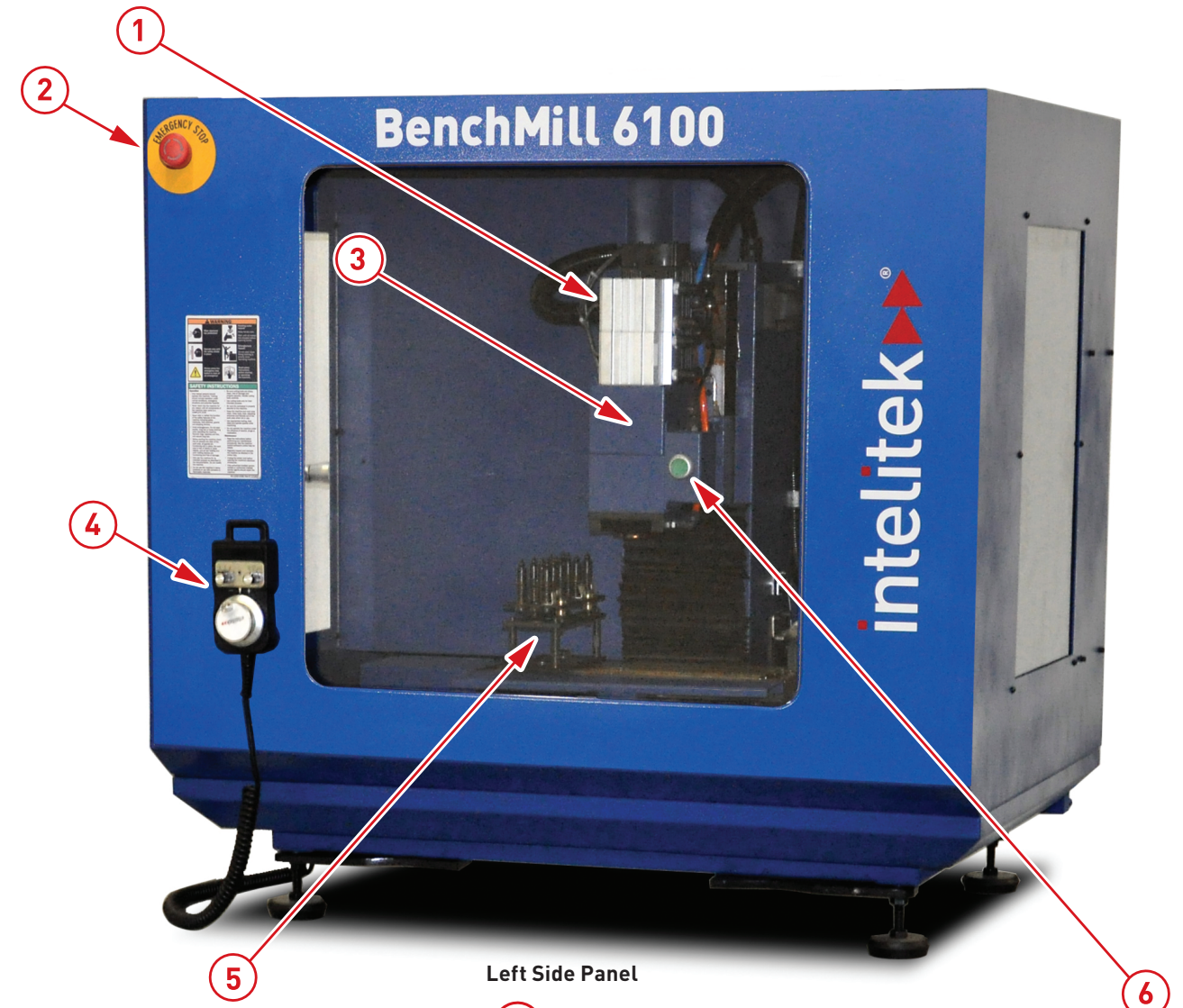
Item	Qty	Description
1	1	ISO 20 Tool holder
2	1	ER 16 Collet - 4mm diameter
3	1	3mm End mill, 3mm shank
4	1	1/8" End mill, 1/8" shank
5	1	ISO20 tool holder wrench - 30mm
6	1	Replacement fuse
7	1	Allen wrenches, set of 6 (3,4,5,6,8,10mm)
8	1	CNCBase Control Software
9	1	Open-ended wrench, 17/19mm
10	1	Open-ended wrench, 9/11mm
11	1	Open-ended wrench, 8/10mm
12	1	ISO 20 Tool holder nut wrench
13-17	1	10-pc hold down set:
		Item Qty Description
13	2	Step block
14	2	Step clamp
15	2	Hex-head nut
16	2	Threaded shank
17	2	T-nut
18	2	Electrical panel keys
19	1	Ethernet cable

Not shown: Storage box



BenchMill 6100

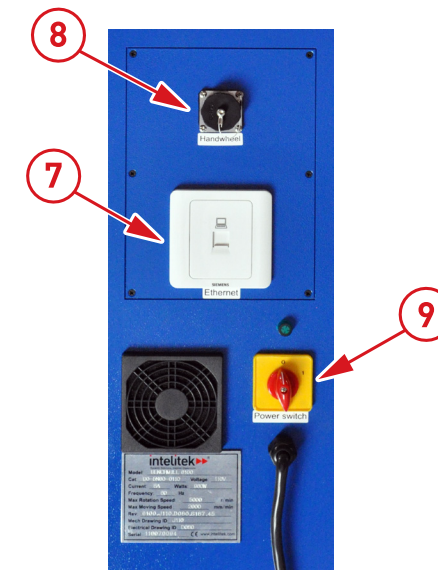
Machining Center



Left Side Panel

MACHINE COMPONENTS

Item#	Description
1	Spindle motor
2	Emergency stop button
3	Spindle head
4	Jog pendant (optional)
5	4-tool ATC (optional)
6	Pneumatic drawbar release
7	Ethernet port
8	Jog pendant port
9	On/Off switch



CONTACT INTELITEK

Toll Free: 800-221-2763
Fax: 603-437-2137
Email: support@intelitek.com
Website: www.intelitek.com

Before contacting Intelitek

- Make sure you have the following information:
- The product serial number
 - The name of the owner of the product
 - Your computer specifications / documentation
 - Notes on any Control Program error messages
 - Access to the hardware and software components of your system

Step 1

Unpack the Machining Center

1 Remove the crating:

1. Cut any banding on the outside of the crate.

CAUTION

Hold the crate components securely when removing them so that they do not strike or damage the machine.

2. Remove the top of the crate.
3. Remove the sides of the crate.

2 Remove the 4 shipping bolts that hold the machine to the pallet.

CAUTION

Lifting hazard!

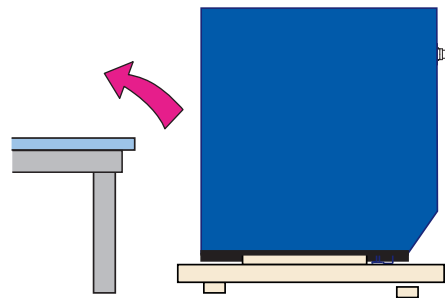
Machine weighs approximately 400 lbs. Failure to lift properly may result in injury.

If possible, use mechanical means, such as a forklift, to lift the machine. If no mechanical lift is available use four people to lift the machine by the carrying handles. Use proper lifting techniques.



400 lbs.

3 Lift the machine off the pallet onto the workbench.



To lift manually:

1. Position the machine table or workbench next to the machine.
2. Turn the 4 lift handles out.
3. With one person on each corner of the machine, carefully lift the machine by the lift handles onto the workbench.
4. Spin the 4 handles back underneath the enclosure.



4 Manually lift the front door and remove the components from the enclosure.

NOTE:

Do not remove the shipping material supporting the spindle until instructed to do so. See Step 5.

Step 2

Connect the Machine

CAUTION

Connect power to the machine first.

If you connect the air to the machine with the power off the door will open.

1 Connect to power:

Plug the power cord on the left side of the machine into your facility electrical power.

CAUTION

Avoid injury or damage to equipment!

Turn off the supply of pressurized air at the source, or at a shutoff valve between the source and the machine before connecting the air lines to the machine.

2 Connect to air:

Connect your facility air supply to the blue air hose extending from the clean-out tray at the bottom left of the rear of the machine.

NOTE:

The method for connecting pressurized air may vary depending on your facility. Consult the appropriate facility personnel if you are unsure how to connect your machine to your air supply.

3 Connect to Ethernet:

Connect the provided Ethernet cable to your computer's Ethernet port and to the CNC machine's Ethernet port.

CAUTION

Avoid damage to equipment!

Do not connect the machine to the Ethernet through a router or network switch. Connect the machine directly to the computer's Ethernet port

Step 3

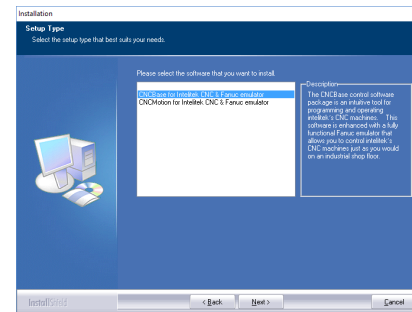
Install the Software

Download the software & documentation:

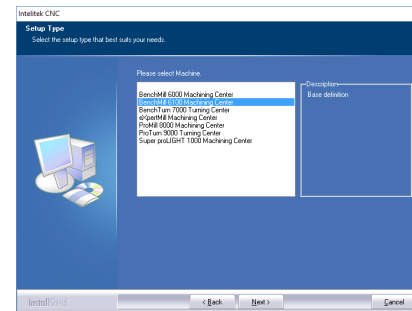
1. Use the enclosed CD or download the latest version of the CNC software and documentation from <http://downloads.intelitek.com/>

Install the software:

2. Launch the installation file by double clicking on the iCNC.exe file to start the installation.
3. When prompted, choose CNCBase for Intelitek CNC.



4. Select the BenchMill 6100 Machining Center.



5. Follow the on-screen instructions.

6. Restart your computer.

Step 4

Configure the IP Address

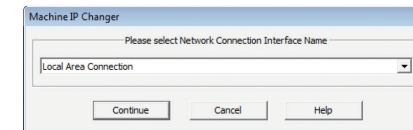
NOTE:

You must have administrator access to run the Machine IP Changer utility.

1. Run the Machine IP Configuration utility:

From the desktop, click Start / CNC Base for Intelitek CNC / Machine IP Configuration.

2. From the dropdown list, select the local area network or network card that you wish to use for the machine then click Continue.



3. When prompted, click Yes to confirm the IP setting. The utility automatically changes your IP address to a static one, allowing iCNC to communicate with the machine.

When the process is finished, Machine IP Changer displays the configuration for all active network connections.

4. Press OK to complete the IP address configuration.



WARNING

Failure to read and understand all safety instructions could result in serious injury.

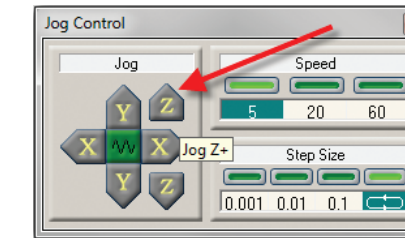
- Before using the machine:
- Read and understand the safety instructions.
- Read and understand all operating instructions in the software's online help.
- Post the safety instructions in the work area.

Step 5

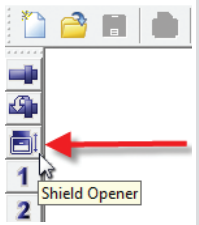
Install the Tool

1 Remove the spindle support:

1. Open the CNCBase software.
2. In the Jog Control Window, click the +Z button to jog the spindle head upward.



3. With the iCNC software running, open the CNC machine door by pressing the Door Open button.



4. Remove the shipping material supporting the spindle.

2 Install the tool in the tool holder:

WARNING

Rotating cutter hazard!

- Handle cutting tools carefully.
- Wear gloves when handling tools.
- Handle the tool and holder by the shank.

1. Remove the tool holder nut from the ISO 20 tool holder.



2. Insert the ER 16 collet into the tool holder nut until it snaps into place.



3. Thread the tool holder nut onto the tool holder. Do not fully tighten.



4. Insert the tool into the collet. Be sure the tool is fully seated in the tool holder.



5. Fully tighten the tool holder nut using the tool holder nut wrench while securing the tool holder with the tool holder wrench.



(See accessories #9 and #12 on next page)

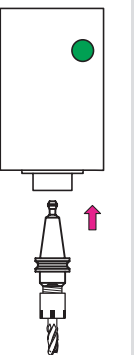
3 Install the tool holder in the spindle:

WARNING

Pinch hazard!

- The machine uses considerable force to hold the tool holder in the spindle.
- Do not allow your fingers to be caught between the tool holder and the spindle while installing.

1. While holding the tool by the bottom of the tool holder, press and hold the green drawbar button on the spindle and insert the tool holder into the spindle.



The pneumatic suction will draw the tool holder into the spindle.

2. Release the drawbar button.

3. Ensure the tool is installed correctly by holding the tool by the flange of the tool holder and turning the tool and spindle.

The tool holder should be secure and the tool and spindle should spin concentrically.